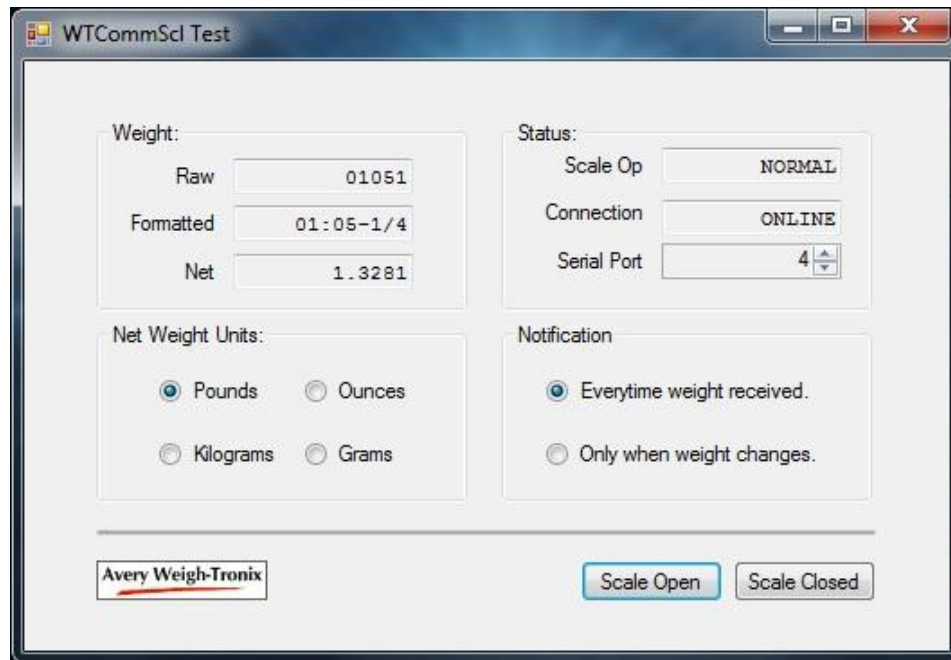


## About WtCommScl Test Program Source

The **WtCommScl Test Program** is used to verify the proper installation and operation of the WtCommScl ActiveX Control with your Model 7010 scale. As a courtesy to its customers, Avery Weigh-Tronix provides the complete source code used to build the test application.

Developers can refer to the sample source code for tips on how to access the ActiveX control when building their own application.



Please see the PROGRAMMERS NOTES section in the MAIN.cs file for more details.

Scale drivers are located [here](#) at the Salter Brecknell website.